



BEAVER AREA MEMORIAL LIBRARY
 100 COLLEGE AVE.
 BEAVER, PA 15009
 724-775-1132

VOL. 50 09/2022
 Mary Jane Ulmer, Editor
 Nicole Brockman, Design Editor

YOU ARE INVITED TO THE BAML FALL FUNDRAISER

Sponsored by the Friends of the Library, the Annual Fall Fundraiser will be held on Saturday, November 5th, from 6:30 p.m. to 8:30 p.m. The 2022 theme is “Hopes & Dreams” focusing on positive ways moving forward. Many clever and beautiful raffle baskets supporting this theme will be displayed throughout the library beginning in October.

Also, a variety of items will be sold on a cash basis in two boutiques. The “Unique Boutique” will be located in the community room and include new and gently-used jewelry, accessories, and a variety of useful and decorative household items. Sponsored by the library’s “Knit and Crochet Club,” beautifully hand-crafted creations will be available for purchase such as hats, scarves, gloves, mittens, socks, shawls, stuffed animals, baby gifts, and much more in the library’s board room.

Tickets for this fundraiser are available at the library for \$15 each, or they may be purchased at the door for \$20 each on November 5th. The price of the ticket includes a snack box and a coffee and tea bar provided by Café Kolache. Tickets for raffle baskets will be on sale in October for \$2 for 1, \$5 for 3, \$10 for 7, and \$50 for 50 tickets.

New BAML Trustee Appointed

The newest member of the Board of Trustees is Dennis Wolford, a long-time resident of Beaver. Recently, he retired after practicing law for forty-five years. He and his wife, Christine, have two sons and five grandchildren. And of course, Dennis is an avid reader!! The staff, volunteers, Friends of the Library, trustees, and members of the community welcome Dennis to the BAML Board of Trustees.

Current Trustees and Officers are:

Paul Hoback, President	Cassie Brkich
Doris Thompson, Vice President	Mary Anne Peluso
Judy McDermott, Secretary	Pat Sims
John Pizella, Treasurer	Dennis Wolford
John Berenbrok	Denise Yates

BAML Annual Fund Drive

Launched in early spring of 2022, the library’s annual fund drive is still underway with a goal of \$27,000. Currently, a total of \$22,748.00 has been received for future library programs, services, and materials. The members of the BAML Board of Trustees thank all those individuals, families, and businesses who contributed to this fund drive in 2022 and to those in previous years. Without these vital contributions the BAML would be unable to provide quality materials and services to residents of the Beaver area and surrounding communities.

BAML Hours

Monday, Tuesday, Wednesday, and Thursday
 10:00 a.m. to 8:00 p.m.

Friday and Saturday
 10:00 a.m. to 5:00 p.m.

FOR PATRONS

To place holds online:
www.beaverlibraries.org

To follow library news:
www.beaverlibrary.com

To download eBooks:
www.yourcloudlibrary.com

FALL FUNDRAISER DONATIONS NEEDED

Members of the BAML Friends are asking patrons for their help in order to make this fundraiser a success. Patrons wishing to contribute a raffle basket are encouraged to keep in mind the 2022 theme, "Hopes & Dreams," and stop in the library to complete a registration form describing his or her entry.



Baskets will be displayed throughout the library as we receive them, starting in October. All winners will be drawn at the event on November 5th.



Also needed are items to be sold (at very reasonable prices) in the Unique Boutique which will be located in the library's community room. We ask that all donations be either new or gently used. Some suggestions are jewelry, figurines, picture frames, candles, collectibles, stationery, small serving plates, vases, scarves, purses, wallets, men's accessories, and small holiday items. Clothing will not be accepted. Donations may be brought to the circulation desk at any time through October 31st.

Library of Things

The Library of Things began as a project in memory of Donald Dawson, the owner of Fischer's Hardware in downtown Beaver. Mr. Dawson passed away in March of 2022, and the family asked that memorial contributions be made to the Beaver Area Memorial Library in his name. As a way to honor all the ways Mr. Dawson spent decades helping members of the Beaver community, the library decided to start a Library of Things, a collection of various tools that patrons could check out to help with various household chores or projects. Since the inception of the project, the library also has decided to add lawn games and other items to assist patrons with their hobbies and outdoor exploration. To date the collection includes:

- Power washer
- Air compressor
- Laser level
- Knife sharpener
- Kill-a-watt meter
- Thermal camera
- GPS
- Air quality detector
- Bicycle repair kit
- Metal detector
- Stud finder and level
- Vehicle diagnostic code reader
- Wood burning kit
- Binoculars
- Telescope
- Trekking poles
- Giant Yard Dice
- Baseball pitching game
- Bocce ball set
- Giant Connect Four
- Giant Jenga
- Coleman Skydome tent
- Kodak film and slide scanner

If there are other items patrons wish to have added to the Library of Things, the library is always open to suggestions!

WIRELESS PRINTER



The Beaver Library now offers wireless printing! A wireless printer was purchased with memorial funds designated for Mr. Donald Dawson. Now, patrons are able to print directly off of their phones or laptops. The printer, along with operation instructions, can be found near our public computers. If anyone needs assistance in order to use this wireless printer, a staff member should be consulted. Copies are .20 cents a page.

BAML BOOK CLUB



Third Friday of Each Month
at
12:00 noon

Library Board Room

Contact the library
for more information

New Employees at the BAML



Quinn Brockman, pictured on the right, has been hired as the new full-time Children’s Librarian. She is an honors graduate of the University of Kansas where she majored in speech, language, and hearing. In her free time Quinn enjoys baking, running, and taking care of her plants. She also loves reading historical fiction and the classics. She is very excited to begin fall story times and have participants return for “Paws for Reading,” because she is passionate about animals. At the library Quinn can be found in the Children’s Library or at the circulation desk.

Paula McCreary has been hired as a library aide at the BAML. She is currently a senior at Beaver Area High School where she is a member of the marching band and concert band. She plays both flute and piccolo and enjoys performing, whether it be at half-time shows or on stage in the auditorium. In her spare time Paula loves to watch old sitcoms and musicals and read fantasy novels. At school she enjoys helping out at the high school library. After graduation she is considering studying history and education at the college level. At the BAML Paula can be found behind the circulation desk or in the children’s department.

Increase in Public Library Subsidy

The Pennsylvania state budget for 2022-2023 has been passed by the Legislature, and the Governor has signed it. It includes an \$11 million increase in the public library subsidy!

The table below shows the amounts for each line item compared to last year.

Line Item	2021-2022 Budget	2022-2023 Budget	Amount of INCREASE!
State Library	\$2,238,000	\$2,238,000	No change
Public Library Subsidy	\$59,470,000	\$70,470,000	\$11 million more = 18% increase
Library Services for Visually Impaired and Disabled	\$2,567,000	\$2,567,000	No change
Library Access	\$3,071,000	\$3,071,000	No change

This increase is the result from years of having conversations, building relationships, sharing both the positive things libraries are doing, and showing the real need for restoring library funding after the cuts (almost 30%) in 2008-2009. This success was achieved due to the key leadership of Stan Saylor who publicly stated that he would work to restore library funding - and he did! The public libraries of Beaver County will significantly benefit from this \$11 million dollar increase.

BORROW THE INTERNET!

Mobile Wi-Fi Hotspots, Tablets, and Google Chrome-books now available for checkout

Have access to unlimited high-speed internet service anywhere a T-Mobile signal can be received

In order to use this service, patrons must be at least 18 years of age with a valid library card

Each item is loaned out for 14 days with no renewals
Late fee is \$1.00 a day

MORE THAN A SNIPPET ABOUT A REALLY GOOD BOOK

It isn't often that I receive an email from a Pulitzer Prize winning author asking me to read his latest publication and to give him my opinion. As a matter of fact, it's the first time in eight and a half decades that it has happened. The author is Eli Saslow, and the book is *Voices from the Pandemic*. The following is my reply:

Dear Eli,

I ordered a copy and it came yesterday. I immediately opened the package, sat down, and began to read. I could not put it down. It is the best book I have read in a long time, and my first thought upon closing the book was "Gee, I wish I were still teaching!"

This book would be on the required reading list for several reasons. Some of the classes were College Prep 10, Humanities 11, and Journalism I, II, and III - the last two of which included the school newspaper. What a prime example to use for journalism and a trove of ideas for discussion for the other two or three classes!

It is marvelous and I'm using that word precisely because I marvel at so many things about the book: the extent of the coverage - all across America; the depth of the coverage - people opened their hearts to you; the range of emotions - too many to list here, but you know what they are, and I could go on. The best part about it for me was the picture that you painted verbally of the way these folks met catastrophe with a wit and grit that we so seldom see portrayed in the current media. I wanted to applaud! I also loved the way the language reflected the breadth of America.

I won't deny that several times I had to wipe my teary eyes. Many of the stories were heart wrenching, and yet the people for the most part kept on keeping on. What a tribute! My heart goes out to Tom Dean of South Dakota, and I love cranky Gloria, angry but funny, a girl after my own heart!

Stanly Plotkin's interview was the perfect ending - the excerpt from Tennyson's *Ulysses*: "I follow knowledge like a sinking star..." and Plotkin's own statement, "I believe in science."

Thank you for the email alerting me to this book. I do not believe I would have picked it up without that, because after the long period of shut-downs and isolations, I would have thought "Who wants to read about that?" But I am so very glad that you sent the email.

I wish you all the best in your future endeavors. (But I really think that you will do okay without my best wishes).

Sincerely,

Doris Thompson

Vice President

BAML Board of Trustees

Library Tidbits

GARDEN TOUR

Sponsored by the Friends of the Library, the BAML annual Garden Tour was held on Saturday, June 25th. Six beautiful gardens (all located in the borough of Beaver) participated. A grand total of \$1,700 was raised at the event. If anyone is interested in having his or her garden on the 2023 tour, please contact the library at any time.

FRIENDS OF THE LIBRARY

In existence for over twenty years, this group of dedicated individuals has sponsored several very successful fundraisers through the years. New members and new ideas are always welcome! This group meets on the fourth Monday of each month at 7:30 p.m. in the community room. If you are interested in becoming a BAML Friend, you are invited to attend the next meeting on October 24th.

PIZZA AND BOOKS!!

A sincere "thank you" is extended to Pizza Joe's located in downtown Beaver. The owners have given permission to the Beaver Library to sell used books in the store's sitting area. A large selection of topics are represented, and every two weeks books are replenished.

LIBRARY DONATIONS

Patrons are reminded that all donations are tax deductible. All donated materials such as books and audiovisual materials (for the annual book sale), memorial and honor contributions, and items for various library fundraisers, are tax deductible as well.

BAML

Knit and Crochet Club

This group meets at the library most
Thursday evenings
from
6:00 p.m. - 7:30 p.m.

Open to men and women of all ages
Instructors are always available to help!



FOR MORE INFORMATION
CONTACT THE LIBRARY

CHILDREN'S DEPARTMENT

Quinn Brockman, Children's Librarian
Sue Ann Curtis, Assistant

Palettes and Pajamas

October 10th
6:30 to 7:30 p.m.



Join us for a cozy night
of CRAFTING
inspired by
Creepy Carrots written by Aaron Reynolds

Ages 4+
Registration required
at
beaverlibrary.com/register



MONSTER PARTY

A night of spooky fun!!

Mummies Witches Ghosts



OCTOBER 24
6:00 P.M. - 7:00 P.M.

For children of all ages

Ghoulish snacks, crafts, and
Story time

Featuring a
COSTUME MARCH
in the library



Registration not required

PAWS FOR READING

Through this popular program children in grades Pre-K through 5 are invited to practice reading aloud to a Certified Therapy Dog at the Beaver Library. If you are interested, please contact us at www.beaverlibrary.com/register to add your child's name to our interest list. Our next scheduled time is October 19th at 6:00 p.m.

STORY TIMES

September 21 - October 20

Baby and Me Story Time

for

Children ages 0 - 23 months
with adult caregiver (s)
Mondays at 10:30 a.m.

Board books and lap sit games

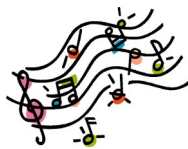


Toddler Story Time

for

Children ages 2 - 3.5
Wednesdays at 10:30

Rhymes, songs, crafts, and interactive readings



Preschool Story Time

for

Children ages 3.5 - 5
Thursdays at 10:30 a.m.

Activity stations, rhymes, songs, and a variety of read-aloud stories



Writing with Wende

Join award-winning local author

Wende Dikec

for an afternoon of creative writing

Saturday, October 8th

1:30 p.m. to 3:30 p.m.

GHOSTS, GOBLINS

and Things That Go **BUMP**

in the Night



Crafting stories to scare the socks off the reader!
for

Students in Grades 5 and up

Snacks Provided



Registration Requested

PLAY K

This program is geared for children starting kindergarten in the fall of 2023. Participants will have the opportunity to "play kindergarten" and learn vital reading readiness skills aligned with PA Standards for Literacy. Registration is required and only open to twelve students each month. If interested, please sign up at beaverlibrary.com/register. Each session occurs from 12:30 p.m. to 2:30 p.m. on the following dates:

October 18th
November 15th
December 20th

For more information contact the library at (724)775-1132.



Come enjoy some HALLOWEEN MOVIES at the library



All movies will be shown at 2:00 p.m. on the date listed. Popcorn and water will be provided, but you are free to bring your own snacks! Open to all ages!

- Saturday, October 1st: Casper
- Wednesday, October 5th: Hocus Pocus
- Wednesday, October 12th: Halloweentown
- Saturday, October 15th: Halloweentown II: Kalabar's Revenge
- Wednesday, October 19th: Hotel Transylvania
- Saturday, October 22nd: The Addams Family
- Wednesday, October 26th: ParaNorman
- Saturday, October 29th: The Nightmare Before Christmas

Quilling Class

at the
Beaver Area Memorial Library

Friday, November 18th
2:00 p.m. to 4:00 p.m.
for
Adult Participants

Fee of \$20 per person
will be charged

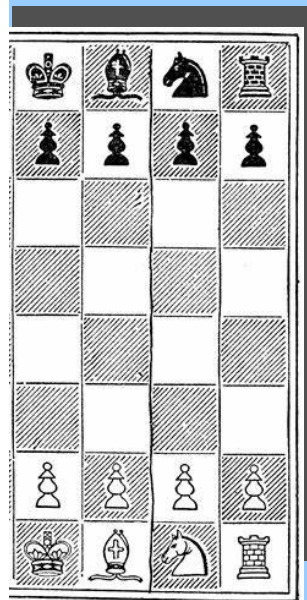
Registration and payment required
before November 18th

Each participant will receive a kit
necessary to create a Christmas greeting
card

Instructor - Karen Schmidt

For more information
contact the library

Beaver Area Memorial Library's CHESS CLUB



Third Thursday
of Every Month
6:00 p.m. - 8:00 p.m.
Library Community Room

No Registration Required

Players of all ages and abilities
are welcome to attend

No experience necessary

If possible, bring your own board

Call the library or stop in
with questions
(724)775-1132

CALENDAR OF EVENTS

BAML Knit and Crochet Club October 6,13, 20, and 27	6:00 p.m. - 7:30 p.m.	Chess Club November 17	6:00 p.m. - 8:00 p.m.
Seniors for Safe Driving October 7	9:30 a.m. - 1:30 p.m.	BAML Book Club November 18	12:00 noon - 1:00 p.m.
LibraryCon at CCBC October 15	12:00 noon - 4:00 p.m.	Quilling Class November 18	2:00 p.m. - 4:00 p.m.
Chess Club October 20	6:00 p.m. - 8:00 p.m.	Thanksgiving Eve November 23	LIBRARY CLOSSES 5:00 p.m.
BAML Book Club October 21	12:00 noon - 1:00 p.m.	THANKSGIVING November 24	LIBRARY CLOSED
Friends of the Library October 24	7:30 p.m. - 9:00 p.m.	BAML Knit and Crochet Club December 1, 8, 15, 22, and 29	6:00 p.m. - 7:30 p.m.
ANNUAL FALL FUNDRAISER (Library Closed) November 5	6:30 p.m. - 8:30 p.m.	Chess Club December 15	6:00 p.m. - 8:00 p.m.
VETERANS DAY November 11	LIBRARY CLOSED	BAML Book Club December 16	12:00 noon - 1:00 p.m.
BAML Knit and Crochet Club November 17	6:00 p.m. - 7:30 p.m.	CHRISTMAS December 24 and 26	LIBRARY CLOSED

SENIORS FOR SAFE DRIVING

A Program for Drivers 55 Years of Age and Older
at the
Beaver Area Memorial Library

Friday, October 7th
9:30 a.m. to 1:30 p.m.

Discount on auto insurance
No on-the-road driving or classroom testing

Register by Phone or Online
1-800-559-4880
www.seniorsforsafedriving.com



**Tuition of \$16.00 per person due prior
to class date**

BAML ANNUAL BOOK SALE HELD



Hundreds of donated books, magazines, DVDs, compact discs, puzzles, and a variety of children's materials were sold at the 2022 annual book sale held on Saturday, June 4th. This event was the combined effort of the Friends of the Library and the Board of Trustees. A grand total of \$5,603.34 was raised and earmarked for the purchase of materials and equipment for the library.

Throughout the year several small pop-up book sales are held in the lobby, depending upon the donations received. Always available for sale in the lobby are many donated fiction titles, which range from \$2.00 each plus tax for hardcover copies, to paperbacks ranging from .50 cents to \$1.00 plus tax.

BEAVER AREA MEMORIAL LIBRARY'S



"Hopes & Dreams"

SATURDAY, NOVEMBER 5TH, 2022
6:30 p.m. - 8:30 p.m.

RAFFLES | UNIQUE BOUTIQUE | KNIT SHOPPE

TICKETS: \$15 IN ADVANCE, \$20 AT THE DOOR
ADMISSION INCLUDES SNACK BOX AND BEVERAGES
THE LIBRARY WILL BE CLOSED NOVEMBER 5TH TO PREPARE FOR THE EVENT

CALL THE LIBRARY AT 724-775-1132 WITH QUESTIONS

SPONSORED BY THE BAML FRIENDS OF THE LIBRARY